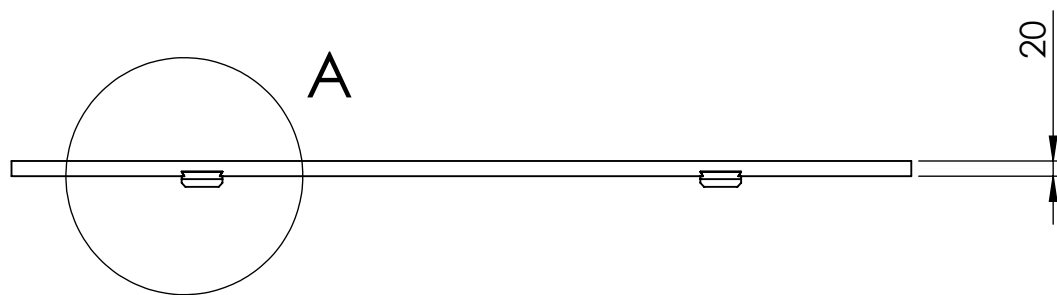
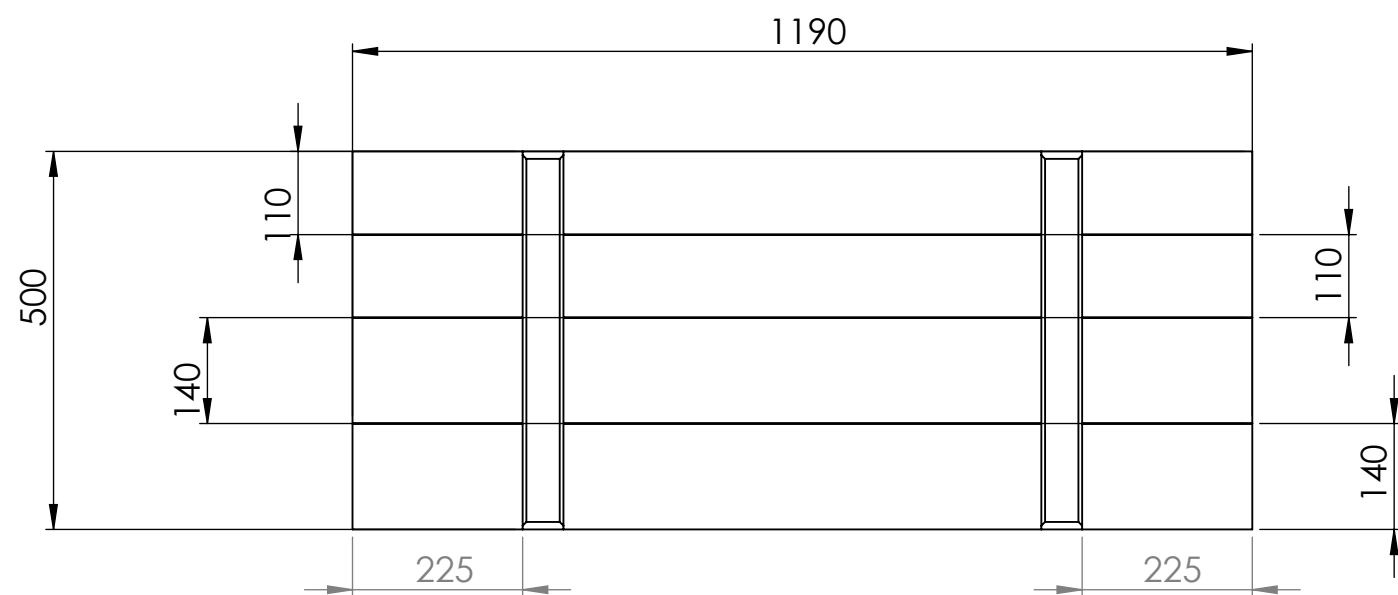
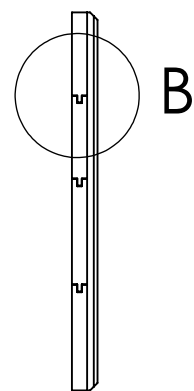
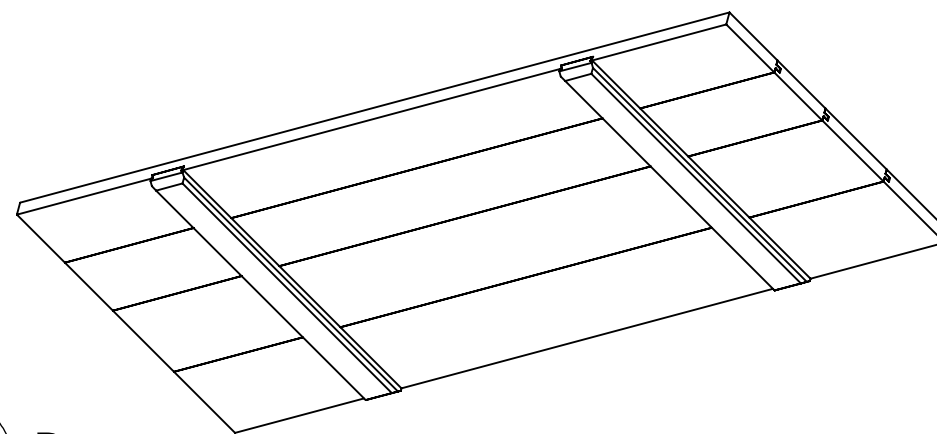
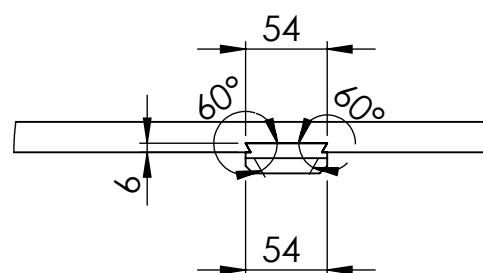


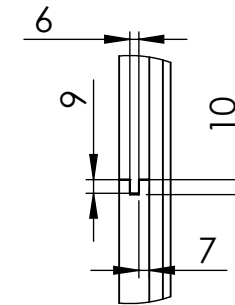
NECLASIFICAT



Detaliu A
Scara 1:5



Detaliu B
Scara 1:5



NOTA :

1. Talpa se monteaza pe fund prin coada de randunica Detaliu A ,se lipeste cu clei si se fixeaza din interior cu 4 holsuruburi 4x35 EN 14592
2. Scandurile se imbina conform Detaliu B si se lipesc cu clei
3. Latimea scanurii la exterior minim 80mm, la interior min 60mm

Proiectat	Necsa I.		
Desenat	Necsa I.		
Verificat	Pop L.		
Contr.STAS	Cernea E.		
Aprobat	Pop L.		
		Masa neta:	
F.A.CUGIR		Scara: 1 : 10	D_A_Fund1
		Data: 28.09.15	